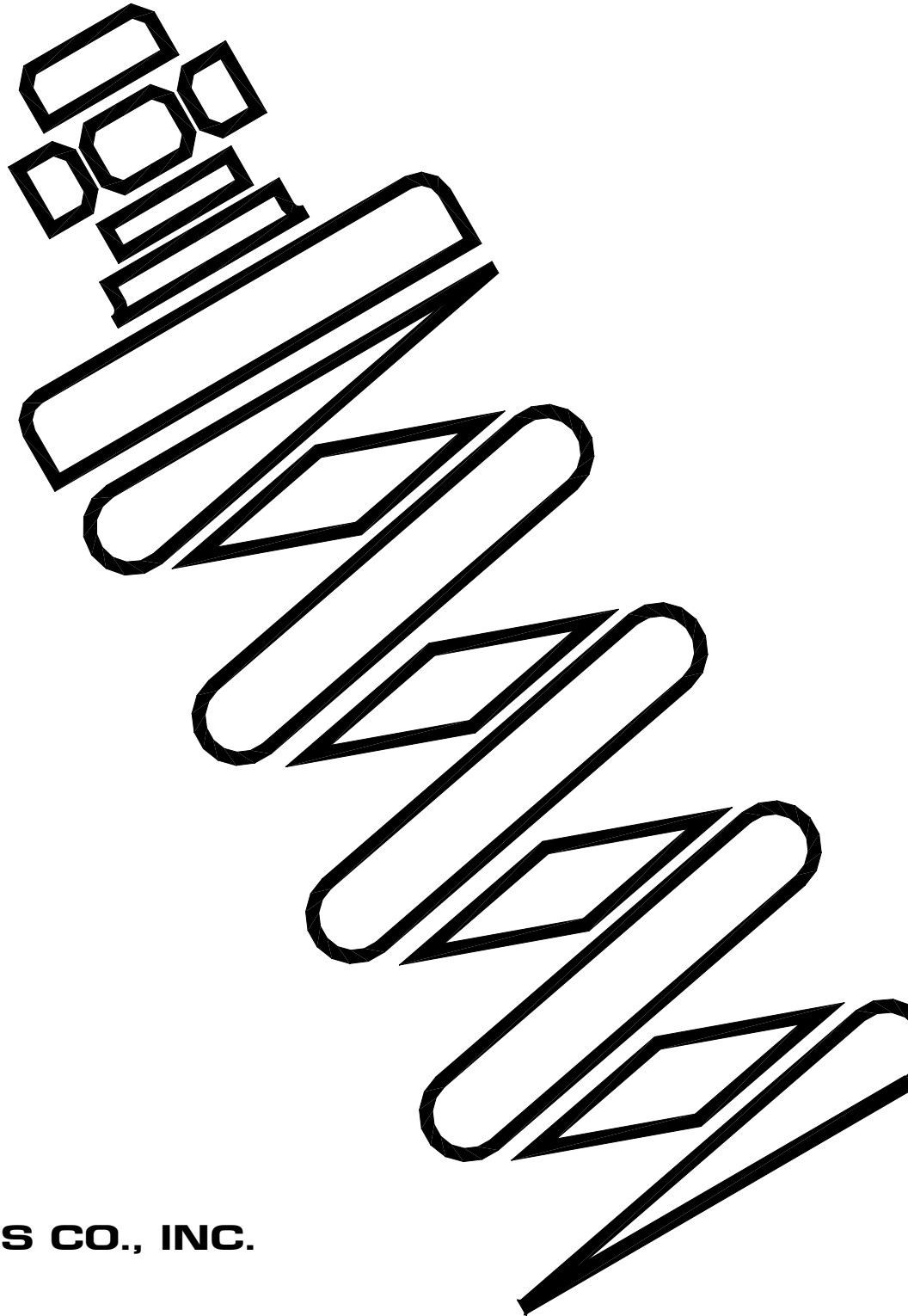


VIBRATION AND SHOCK MOUNTS



ACE MOUNTINGS CO., INC.



SERIES 100 SPRING ISOLATORS

CATALOG NO. 81A-034-H



Type "102"



Type "103"

Superior Isolation Efficiency: Series "100" spring isolators consist of cast iron housing and 1" deflection spring elements with built-in leveling bolt to provide excellent isolation of vibration over a wide frequency range.

Maximum Lateral Stability: Resilient inserts between upper and lower housings prevent lateral movement. Units with adjustable side snubbers provide additional control.

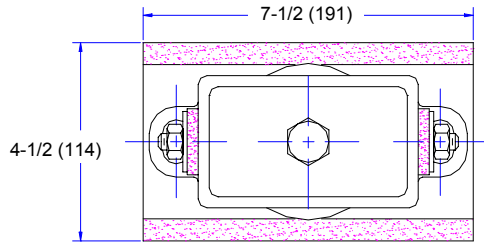
Effective Noise Reduction: The low impedance elastomeric pad effectively interrupts structure-borne noise transmission paths to prevent noise amplifications caused by sounding board effects.

Low Installation and Maintenance Cost: Series "100" spring isolators eliminate bolting equipment to floor in many applications. Floors are protected from impacts. Internal stress and shock feedback are significantly reduced for longer machine life and less downtime.

ACE MOUNTINGS CO., INC.

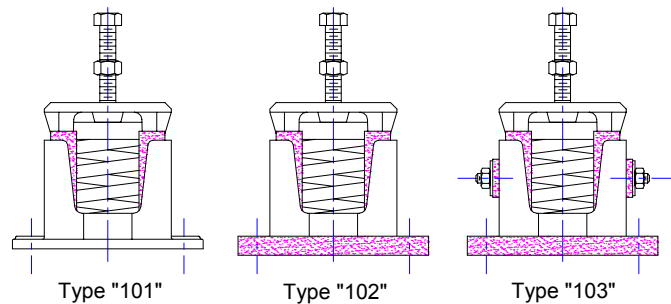
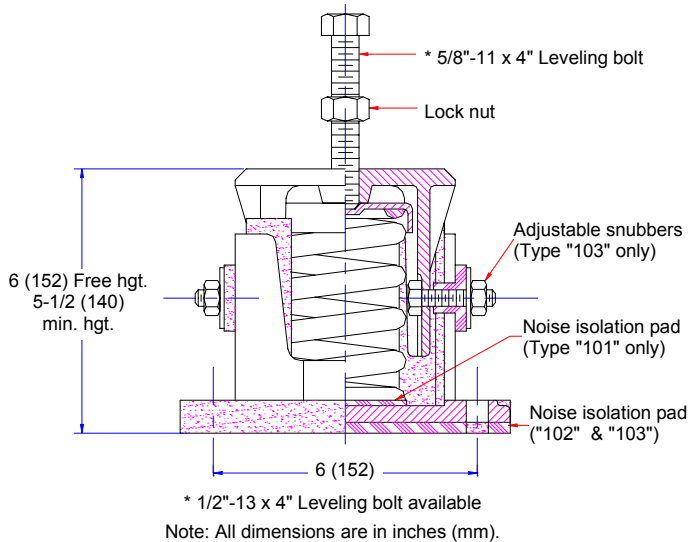
11 Cross Avenue
South Amboy, NJ 08879
Tel: (732)721-6200 Fax: (732)721-5005
Email: acemount@att.net
Website: www.acemount.com

Dimensions • Load Rating • Installation Procedures

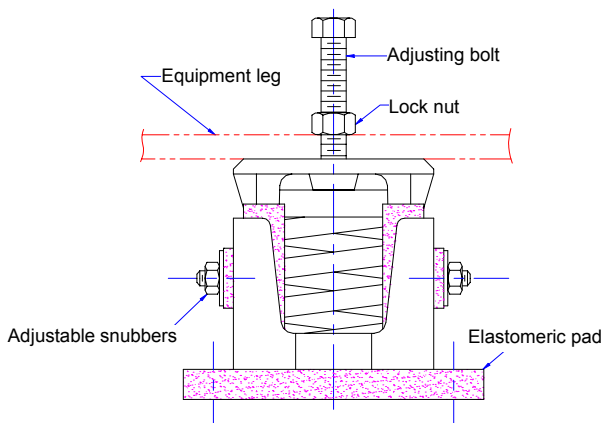


Type	Color Of Spring	Spring Rate lbs/in	Max. Load In lbs	Defl. In Inches
A	Gray	100	150	1.5
B	Tan	200	260	1.3
C	Yellow	335	435	1.3
D	Green	500	550	1.1
E	Red	780	780	1.0
F	Silver	1070	1070	1.0
G	Brown	1400	1400	1.0
H	Black	1800	1800	1.0
K	Blk & Yel*	2500	2500	1.0

* Inner spring



INSTALLATION PROCEDURES



1. Position and secure isolators on a level surface under equipment leg.
2. Insert adjusting bolt through equipment leg with lock nut in place and into threaded hole in isolator top housing.
3. Proceed to adjust isolators by turning adjusting bolt CW several turns at a time alternately on each isolator until equipment is raised uniformly. Then level as required.
4. Tighten lock nut firmly in place against the top of the equipment leg.
5. Adjust snubbers (Type "103").
6. Isolators are now properly adjusted and ready for equipment to be operated.

ACE MOUNTINGS CO., INC.

11 Cross Avenue
South Amboy, NJ 08879
Tel: (732)721-6200 Fax: (732)721-5005
Email: acemount@att.net
Website: www.acemount.com



SERIES 120

ALL PURPOSE

SPRING ISOLATORS

CATALOG NO. 81A-035-K



Superior Isolation Efficiency: Series "120" spring isolator provides static deflection of 1 inch. As a result, it eliminates bolting of equipment to floor in many applications, improves working conditions, reduces building and machine maintenance.

Lateral Stability: Elastomer cushioned housing provides damping and controls excessive horizontal movement.

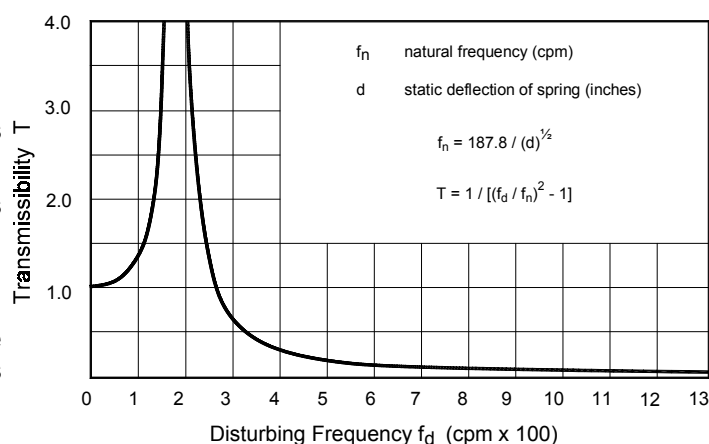
Safe and Compact: All welded steel housing assures strength and weight saving advantages.

East to Install: Built-in leveling bolt eliminates shimming in all applications, and saves installation cost.

Effective Noise Reduction: The elastomeric pad effectively interrupts structure-borne noise transmission paths to prevent noise amplifications caused by sounding-board effect.

Variations Available: Internal level adjustment, adjustable snubbers and special modifications are available.

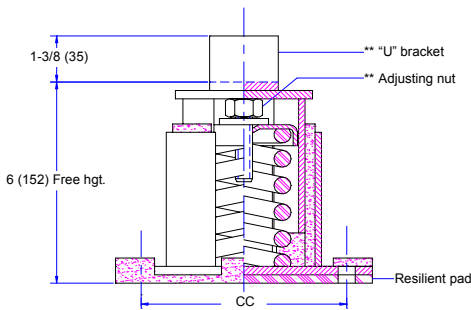
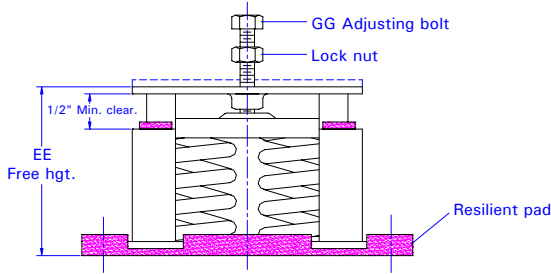
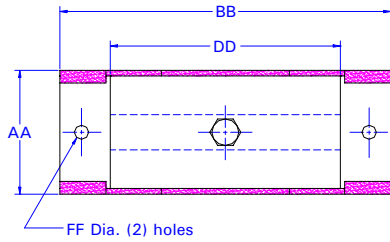
TRANSMISSIBILITY vs FREQUENCY



ACE MOUNTINGS CO., INC.

11 Cross Avenue
 South Amboy, NJ 08879
 Tel: (732)721-6200 Fax: (732)721-5005
 Email: acemount@att.net
 Website: www.acemount.com

Dimensions • Load Rating • Installation Procedures



Type "1211"

** The "U"-BRACKET and INTERNAL ADJUSTING features are designed for bases where anchor holes in the base can not be provided or are not accessible.

Type	Dimensions in Inches (mm)							Qty of Spring	Sh. Wt. (lbs)
	AA	BB	CC	DD	EE	FF	GG		
121									
1208	4	7-1/2	6	4	6 ± 1/2	11/16" for	5/8"-11 x 4	1	12
1211	(102)	(191)	(152)	(102)	(152 ± 13)	1/2 Bolt			
122									
&	4	11-1/2	10	8	6 ± 1/2	11/16" for	5/8"-11 x 4	2	18
1209	(102)	(292)	(254)	(203)	(152 ± 13)	1/2 Bolt			
124	6	14	12-1/2	10-1/2	6-1/2 ± 1/2	11/16" for	1"-8 x 5	4	32
	(152)	(356)	(318)	(267)	(165 ± 13)	5/8 Bolt			
126	8	18	15-1/2	14	7-3/4 ± 1/2	13/16" for	*	6	48
	(203)	(457)	(394)	(356)	(197 ± 13)	3/4 Bolt			

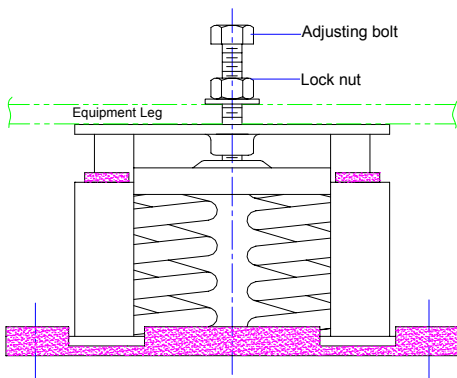
Note:

- 1208 is identical to 121, with a 1/4" spacer on top plate.
1209 is identical to 122, with a 1/4" spacer on top plate.
- Max load shown are for static load. For dynamic load, do not exceed 70% of max load.
- * Available in: 3/4"-10 x 5" and 1"-8 x 5"

Size	Color of Spring	121, 1208, & 1211		122 & 1209		124		126		Defl. (inches)
		Rate (lbs/in)	Max. Load (lbs)	Rate (lbs/in)	Max. Load (lbs)	Rate (lbs/in)	Max. Load (lbs)	Rate (lbs/in)	Max. Load (lbs)	
A	Gray	100	150	200	300	400	600	600	900	1.5
B	Tan	200	260	400	520	800	1040	1200	1560	1.3
C	Yellow	335	435	670	870	1340	1740	2010	2610	1.3
D	Green	500	550	1000	1100	2000	2200	3000	3300	1.1
E	Red	780	780	1560	1560	3120	3120	4680	4680	1.0
F	Silver	1070	1070	2140	2140	4280	4280	6420	6420	1.0
G	Brown	1400	1400	2800	2800	5600	5600	8400	8400	1.0
H	Black	1800	1800	3600	3600	7200	7200	10800	10800	1.0
K	Blk & *Yel	2500	2500	5000	5000	10000	10000	15000	15000	1.0

* Inner spring

INSTALLATION PROCEDURES



1. Position and secure isolators on a level surface under equipment leg.
2. Insert adjusting bolt through equipment leg with lock nut in place and into threaded hole in isolator top housing.
3. Proceed to adjust isolators by turning adjusting bolt CW several turns at a time alternately on each isolator until equipment is raised uniformly. Then level as required.
4. Tighten lock nut firmly in place against the top of the equipment leg.
5. Isolators are now properly adjusted and ready for equipment to be operated.

ACE MOUNTINGS CO., INC.

11 Cross Avenue
South Amboy, NJ 08879
Tel: (732)721-6200 Fax: (732)721-5005
Email: acemount@att.net
Website: www.acemount.com



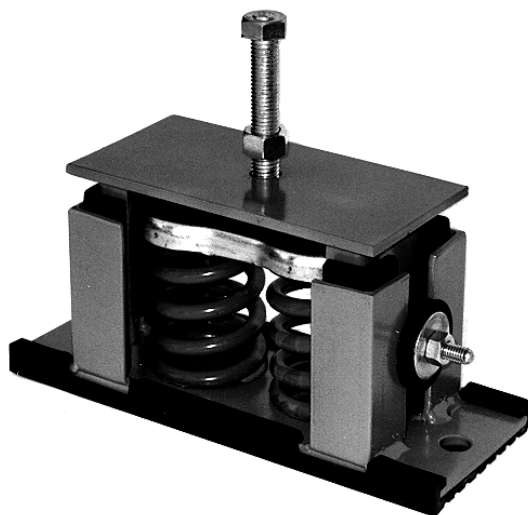
SERIES 170

ALL PURPOSE

SPRING ISOLATORS

With Adjustable Snubbers

CATALOG NO. 95A-1020-D



Material Specifications

Housings: A-36

Leveling Bolts: A-325

Spring: ASTM 229
oil tempered
and alloy wire

Elastomer: Neoprene

Superior Isolation Efficiency: Series "170" spring isolator provides static deflection of 1 inch. As a result, it eliminates bolting equipment to floor in many applications, improves working conditions, reduces building and machine maintenance.

Lateral Stability: Elastomer cushioned housing and adjustable snubbers provide damping and control excessive horizontal and vertical movement.

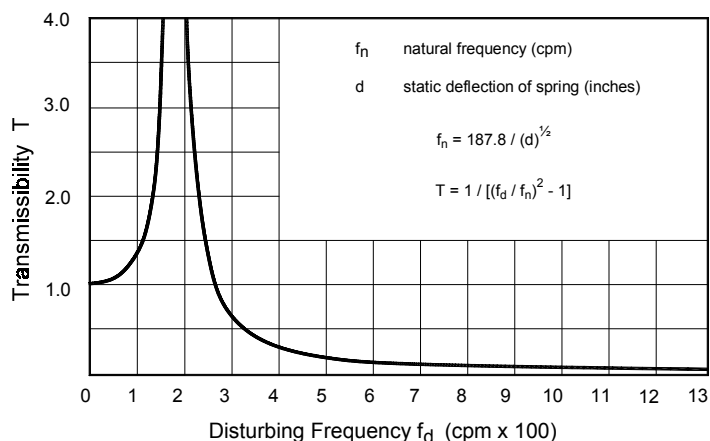
Safe and Compact: All welded steel housing assures strength and weight saving advantages.

East to Install: Built-in leveling bolt eliminates shimming in all applications, and saves installation cost.

Effective Noise Reduction: The elastomeric pad effectively interrupts structure-borne noise transmission paths to prevent noise amplifications caused by sounding-board effect.

Variations Available: Internal level adjustment and special modifications are available.

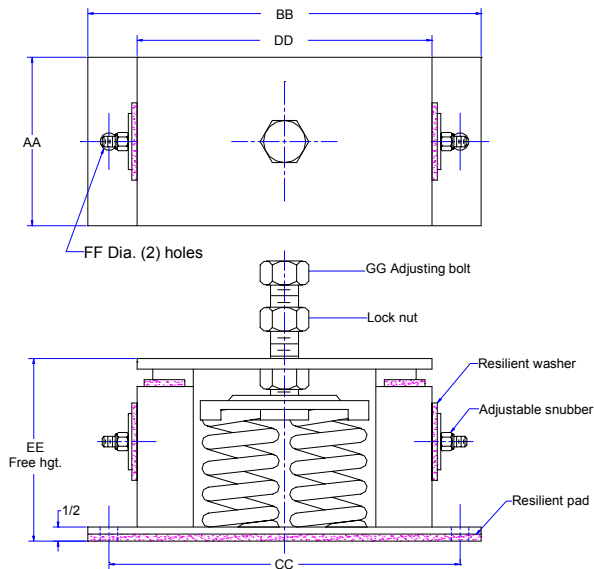
TRANSMISSIBILITY vs FREQUENCY



ACE MOUNTINGS CO., INC.

11 Cross Avenue
South Amboy, NJ 08879
Tel: (732)721-6200 Fax: (732)721-5005
Email: acemount@att.net
Website: www.acemount.com

Dimensions • Load Rating • Installation Procedures



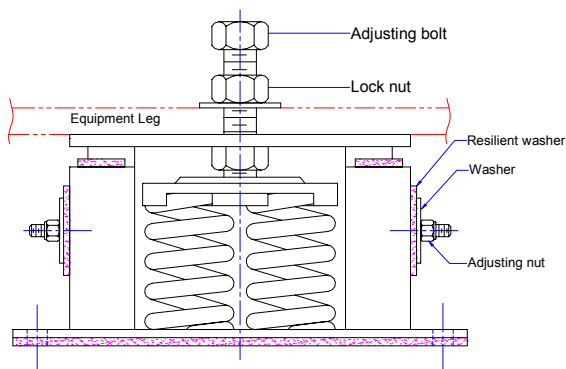
Size	Color of Spring	171		172		174		Defl. (inches)
		Rate (lbs/in)	Max. Load (lbs)	Rate (lbs/in)	Max. Load (lbs)	Rate (lbs/in)	Max. Load (lbs)	
A	Gray	100	150	200	300	400	600	1.5
B	Tan	200	260	400	520	800	1040	1.3
C	Yellow	335	435	670	870	1340	1740	1.3
D	Green	500	550	1000	1100	2000	2200	1.1
E	Red	780	780	1560	1560	3120	3120	1.0
F	Silver	1070	1070	2140	2140	4280	4280	1.0
G	Brown	1400	1400	2800	2800	5600	5600	1.0
H	Black	1800	1800	3600	3600	7200	7200	1.0
K	Blk & *Yel	2500	2500	5000	5000	10000	10000	1.0

* Inner spring

Type	Dimensions in Inches (mm)							Qty of Spring	Sh. Wt. (lbs)
	AA	BB	CC	DD	EE	FF	GG		
171	4 (102)	7-1/2 (191)	6 (152)	4 (102)	6 ± 1/2 (152 ± 13)	11/16" for 1/2 Bolt	5/8"-11 x 4	1	12
172	4 (102)	11-1/2 (292)	10 (254)	8 (203)	6 ± 1/2 (152 ± 13)	11/16" for 1/2 Bolt	5/8"-11 x 4	2	18
174	6 (152)	14 (356)	12-1/2 (318)	10-1/2 (267)	6-1/2 ± 1/2 (165 ± 13)	11/16" for 5/8 Bolt	*	4	32

* 1"-8 x 5" or 3/4"-10 x 5" leveling bolt

INSTALLATION PROCEDURES



1. Elevate equipment base to 6-1/2" off the foundation surface. Insert blocks to hold this position in place. Secure isolators to foundation with 1/2" anchor bolts.
2. Insert adjusting bolt through equipment leg with lock nut in place and into threaded hole in isolator top housing.
3. Adjust isolators by turning adjusting bolt CW several turns at a time alternately on each isolator until equipment is raised uniformly off all blocks.
4. Level equipment with adjusting bolt. Tighten lock nut firmly in place against the top of the equipment leg.
5. Snubber adjustment:
 - a. Loose adjusting nut.
 - b. Tighten adjusting nut 1/2 a turn after it is in contact with washer.
6. Isolators are now properly adjusted and ready for equipment to be operated.

ACE MOUNTINGS CO., INC.

11 Cross Avenue
 South Amboy, NJ 08879
 Tel: (732)721-6200 Fax: (732)721-5005
 Email: acemount@att.net
 Website: www.acemount.com



SERIES 180

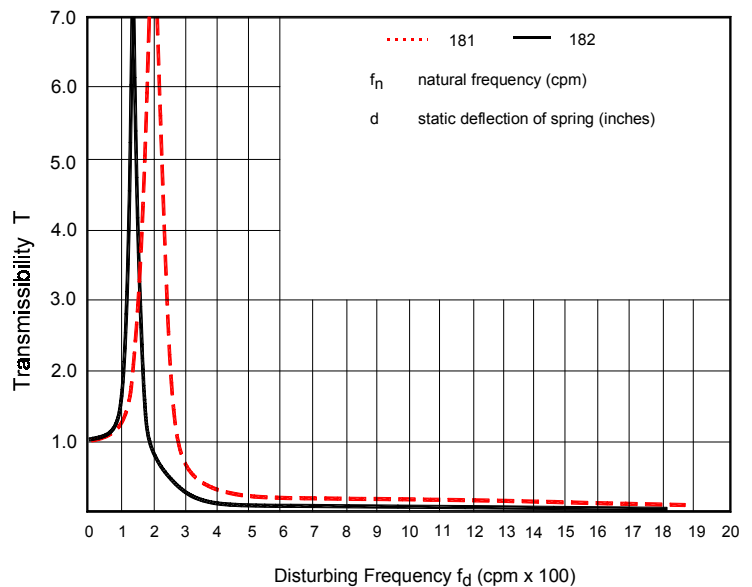
SPRING ISOLATORS

CATALOG NO. 90A-651-E



Type "181"

Type "182"



Superior Isolation Efficiency: Series "180" spring isolators feature static deflection from 1 to 2.7 inches to provide excellent isolation of vibrations over a wide frequency range.

Safe And Compact Design: Through-bolt and adjustable snubbers designs of series "180" spring isolators are ideal for internally mounted fans in large HVAC units. Low stress spring design increases service life.

All Directional Design: The type "181" and "182" models are designed to resist lateral and vertical loads of seismic zone applications.

Wide Load Ranges: Load capacities start from 50 lbs. to 1800 lbs. for each spring unit.

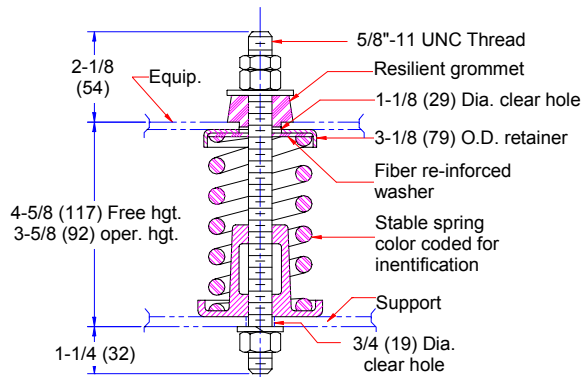
Maximum Lateral Stability: Large O.D. to operating height ratio increases spring stability.

ACE MOUNTINGS CO., INC.

11 Cross Avenue
South Amboy, NJ 08879
Tel: (732)721-6200 Fax: (732)721-5005
Email: acemount@att.net
Website: www.acemount.com

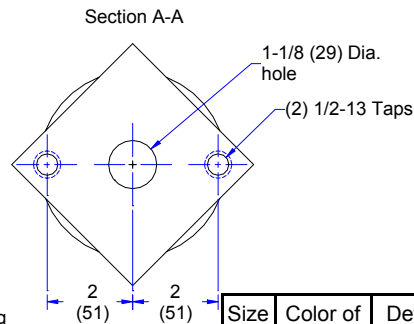
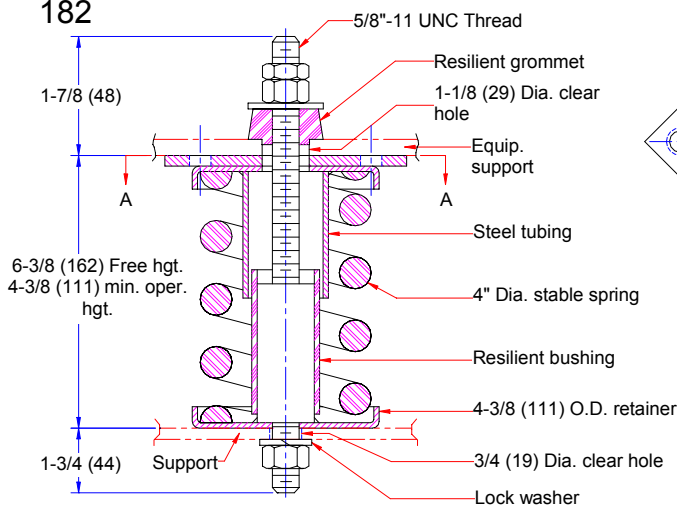
Dimensions • Load Rating

181



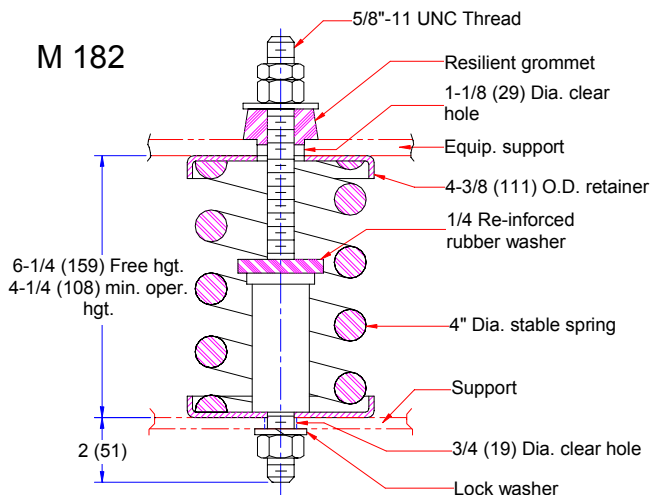
Size	Color of spring	Spring rate (Lbs/in)	Max. load (Lbs)	Lateral seismic load (G's)
A	Gray	100	150	4.6
B	Tan	200	260	2.65
C	Yellow	335	435	1.58
D	Green	500	550	1.25
E	Red	780	780	0.88
F	Silver	1070	1070	0.64
G	Brown	1400	1400	0.49
H	Black	1800	1800	0.38

182



Size	Color of spring	Deflection (Inches)	Load range (Lbs)	Lateral seismic load (G's)
A	Gray	1.75-2.70	130-202	6.38
B	Tan	1.75-2.3	218-287	4.49
C	Yellow	1.75-2.35	306-411	3.13
D	Green	1.75-2.3	367-480	2.68
E	Red	1.75-2.17	481-596	2.16
F	Silver	1.75-2	612-700	1.84
G	Brown	1.75-2	743-850	1.51
H	Black	1.75-2	1050-1200	1.07

M 182



Size	Color of spring	Deflection (Inches)	Load range (Lbs)
A	Gray	1.75-2.70	130-202
B	Tan	1.75-2.3	218-287
C	Yellow	1.75-2.35	306-411
D	Green	1.75-2.3	367-480
E	Red	1.75-2.17	481-596
F	Silver	1.75-2	612-700
G	Brown	1.75-2	743-850

Note: All dimensions are in inches (mm).

ACE MOUNTINGS CO., INC.

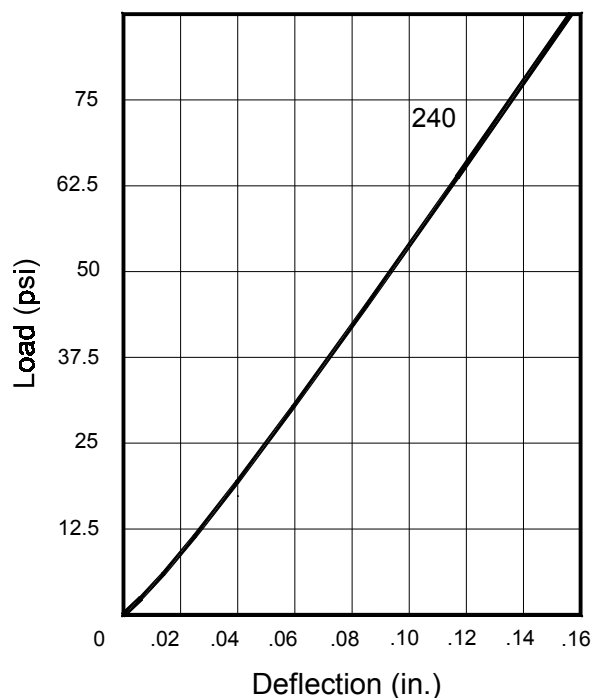
11 Cross Avenue
South Amboy, NJ 08879
Tel: (732)721-6200 Fax: (732)721-5005
Email: acemount@att.net
Website: www.acemount.com



SERIES 240

RUBBER & CORK PADS

CATALOG NO. 90A-661-D



Specifications : 1/4" thick, 50 durometer, oil resistant, ribbed elastomeric pads bonded to both sides of 1/2" cork pad.

Load Capacity : 50 psi for static load; 25 psi for impact load.

Sizes Available : Standard sizes - 6 x 36, 4 x 36 (inches)
Small sizes - 4 x 4, 6 x 3, 6 x 4, 6 x 6 (inches)

Applications : Engine generator sets, machineries.

ACE MOUNTINGS CO., INC.

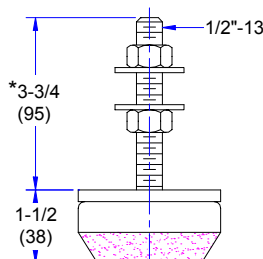
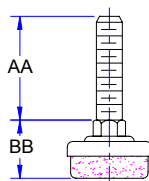
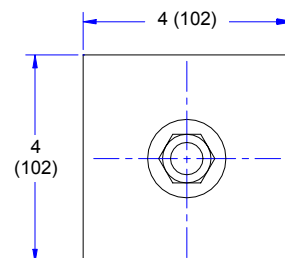
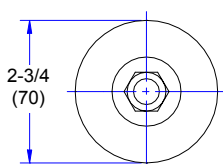
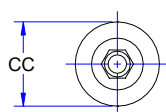
11 Cross Avenue
South Amboy, NJ 08879
Tel: (732)721-6200 Fax: (732)721-5005
Email: acemount@att.net
Website: www.acemount.com



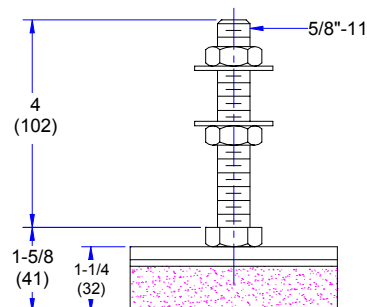
SERIES 250

LEVELING MOUNTS

CATALOG NO. 92A-771-F



* Available in different lengths



Type	Stud Size	Dimensions in inches (mm)			Max. Load in lbs.
		AA	BB	CC	
251	5/16-18	1-1/2 (38)	7/8 (22)	1-1/8 (29)	100
252	3/8-16	3 (76)	1 (25)	1-5/8 (41)	300
253	1/2-13	2 (51)	1-1/8 (29)	1-5/8 (41)	300

Type	Max. Load in lbs.	Defl. in inches
254-A	250	.125
254-B	450	.125
254-C	700	.125

Type	Max. Load in lbs.	Defl. in inches
255-A	1800	.125
255-B	3000	.125

Type 251, 252, 253: These vibration dampening leveling mounts feature zinc plated steel parts and gray neoprene rubber base. The hex-shoulder is turnable to ease adjustment under load. They are ideal for office and laboratory equipment.

Type 254: Type 254 is designed for light weight machineries and assembly line. Various sizes and lengths of leveling bolts are available for the requirements.

Type 255: Type 255 is a heavy duty leveling mount. Standard material is neoprene. Special material in silicone and conductive rubber are also available.

ACE MOUNTINGS CO., INC.

11 Cross Avenue
South Amboy, NJ 08879
Tel: (732)721-6200 Fax: (732)721-5005
Email: acemount@att.net
Website: www.acemount.com

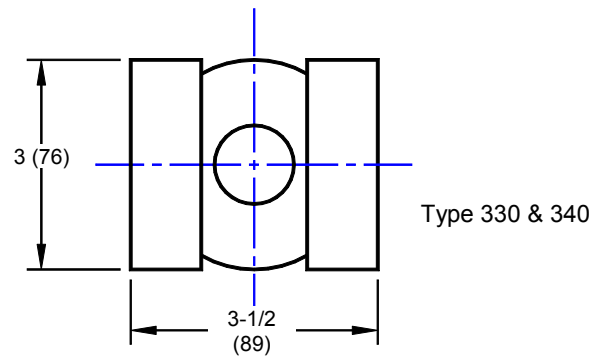


Series 330 & 340 Hangers

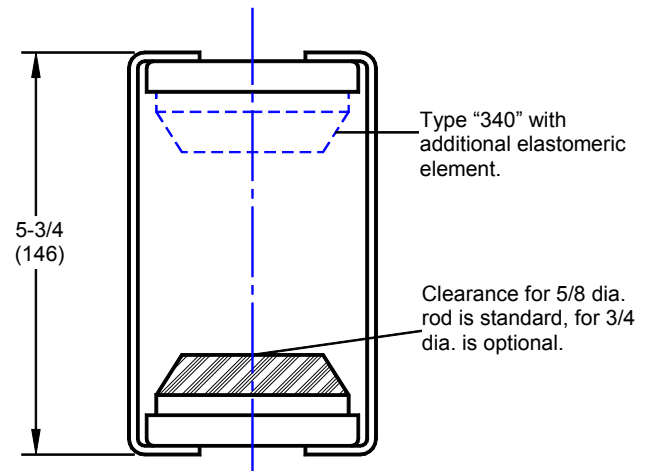
CATALOG NO. 90A-608-1-D

Type 330 hangers consist of a single elastomeric load element assembled into a welded steel hanger bracket. Large clearance hole in bracket allow the hanger rod a 15 degree misalignment. Type 330 hangers may be selected where space and cost must be minimized.

Type 340 hangers consist of two elastomeric elements in series assembled into a welded steel hanger bracket. Large clearance hole in bracket allow the hanger rod a 15 degree misalignment. Type 340 hangers provide higher isolation efficiency due to the deflections from both elastomeric elements.



Size	Max. load in lbs.	Deflection in Inches	
		330	340
A	200		
B	450	0.25	0.5
C	700		



Note: All dimensions are in inches (mm).

ACE MOUNTINGS CO., INC.

11 Cross Avenue
South Amboy, NJ 08879
Tel: (732)721-6200 Fax: (732)721-5005
Email: acemount@att.net
Website: www.acemount.com

MP950003

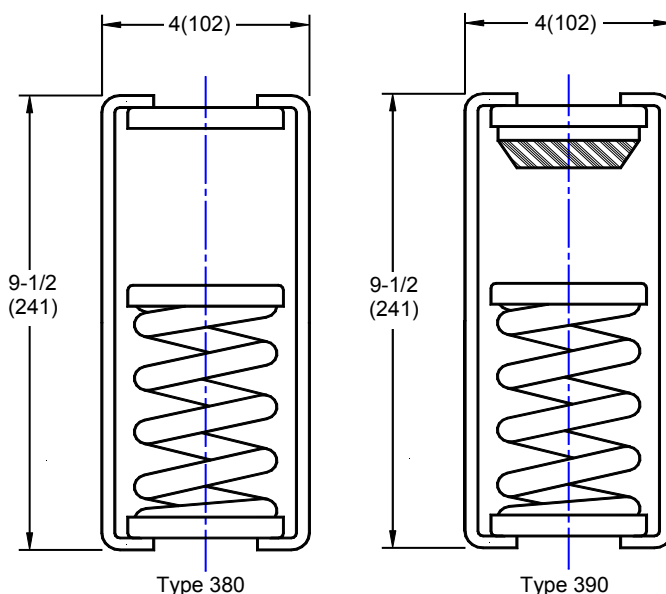


Series 380 & 390 Hangers

CATALOG NO. 90A-608-2-D

Type 380 hangers consist of high deflection stable spring element, upper and lower retaining cups, noise isolation pad, and welded steel hanger bracket. All spring element are color coded for easier identification and are designed to provide up to 50% overload capacity. Large clearance hole in bracket at spring will allow the hanger rod a 15 degree misalignment.

Type 390 hangers consist of high deflection stable spring element in series with an elastomeric insert, assembled into a welded steel hanger bracket with spring retaining cups, and noise isolation pad.



Note: 1. Clearance for a 5/8 dia. rod is standard, for a 3/4 dia. rod is optional.

2. All dimensions are in inches (mm).

Spring Size	Color	Max. Load in lbs.		Deflection in inches
		380	390	
AA	Light Green	50	50	1.0
A	Gray	150	150	1.5
B	Tan	260	260	1.3
C	Yellow	435	435	1.3
D	Green	550	550	1.1
E	Red	780	780	1.0
F	Silver	1070		1.0
G	Brown	1400		1.0
H	Black	1800		1.0

ACE MOUNTINGS CO., INC.

11 Cross Avenue
South Amboy, NJ 08879
Tel: (732)721-6200 Fax: (732)721-5005
Email: acemount@att.net
Website: www.acemount.com

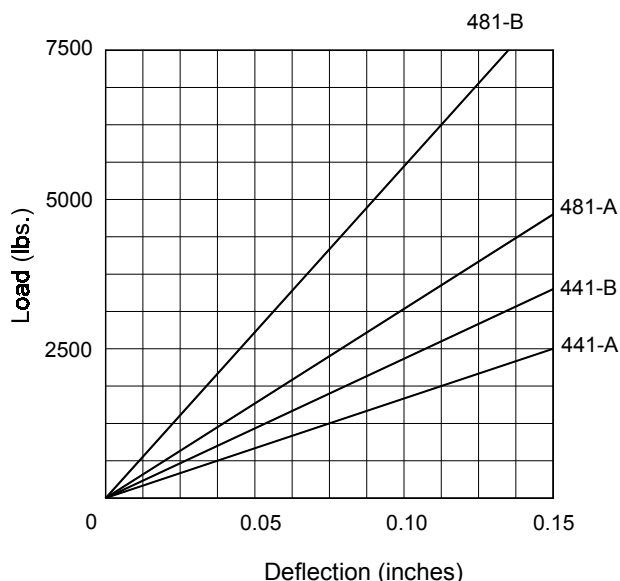
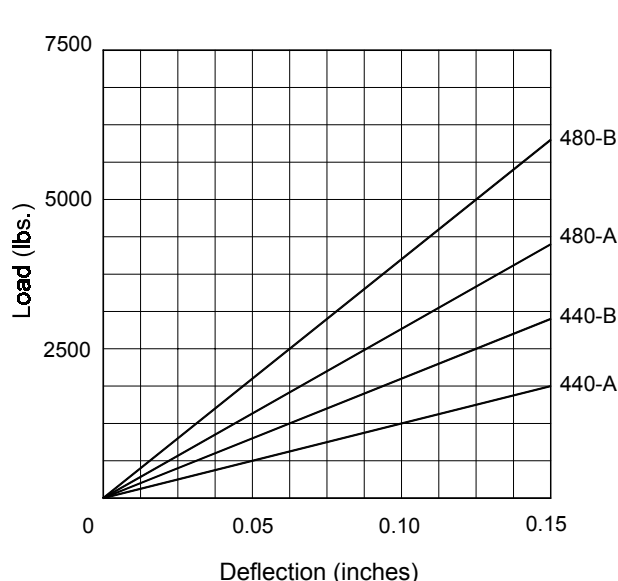


SERIES 400

MOLDED

NEOPRENE PADS

CATALOG NO. 90A-600-D



Material:

- Oil, ozone, and weather resistant neoprene rubber is standard.
- Silicone rubber for high, and low temperature environment.
- Conductive rubber for static control.

Economy:

- Higher load capacity, up to 200 psi can be applied.
- No maintenance is required after installation.

Versatility:

Can be used as single or multiple unit for unlimited load capacities.

ACE MOUNTINGS CO., INC.

11 Cross Avenue
South Amboy, NJ 08879
Tel: (732)721-6200 Fax: (732)721-5005
Email: acemount@att.net
Website: www.acemount.com



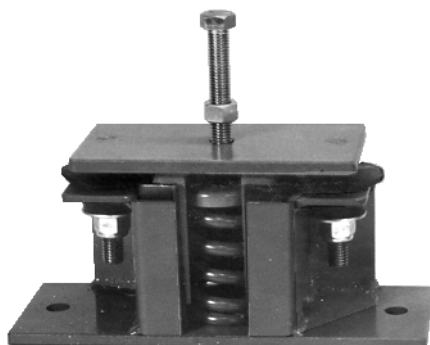
CATALOG NO. 83-A-170-Q

SERIES 630

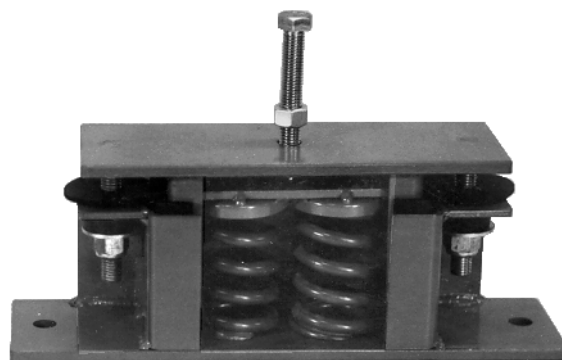
SPRING ISOLATORS

for
SEISMIC ZONE 3 & ZONE 4,
MARINE, & MOBILE APPLICATIONS

Material Specifications
Housings: A-36 Steel
Threaded Parts: Grade 5 Steel
Springs: ASTM-229 & A 401
Elastomer: Neoprene



Type "631"



Type "632"

Extra Strength Housing Design: All welded steel housing with unique structure design provides the extra safety for the seismic, marine and mobile applications.

Superior Isolation Efficiency: Series "630" spring isolator provides static deflection of 1 inch. As a result, it effectively reduces the vibration and improves the over all equipment performance.

Effective Noise Reduction: The resilient washers interrupt the structure-borne noise transmission paths to prevent noise amplifications caused by sounding-board effect.

Seismic Applications: Designs meet UBC, BOCA, and worldwide codes.

Laterally Stable: Elastomer cushioned housing provides damping and controls excessive horizontal movement.

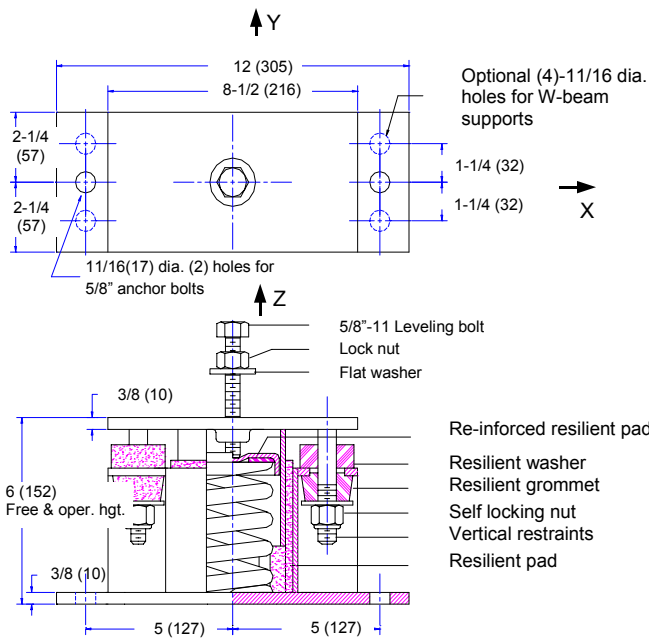
Vertically Secured: Vertical restraints with resilient grommets prevent the housing from being pulled out from the anchored base.

Easy to Install: Built-in leveling bolt eliminates shimming in all applications, and saves installation cost.

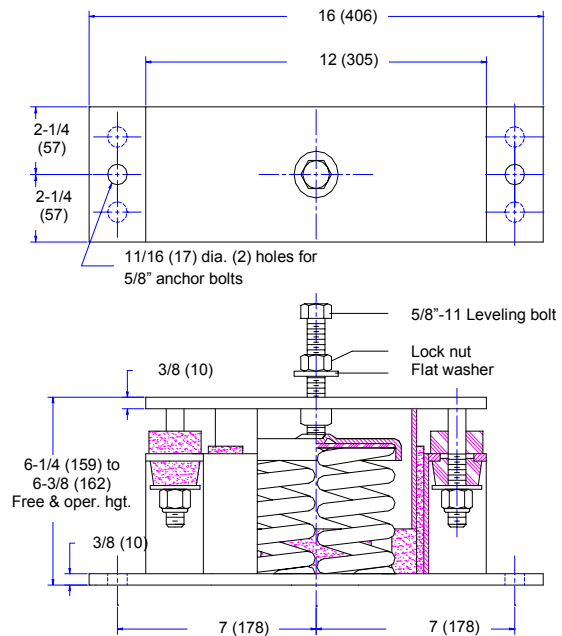
Variations Available: Internal level adjustment, high strength leveling bolt and special modifications are available.

ACE MOUNTINGS CO., INC.

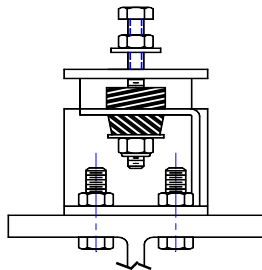
11 Cross Avenue
South Amboy, NJ 08879
Tel: (732)721-6200 Fax: (732)721-5005
Email: acemount@att.net
Website: www.acemount.com



Type "631"



Type "632"

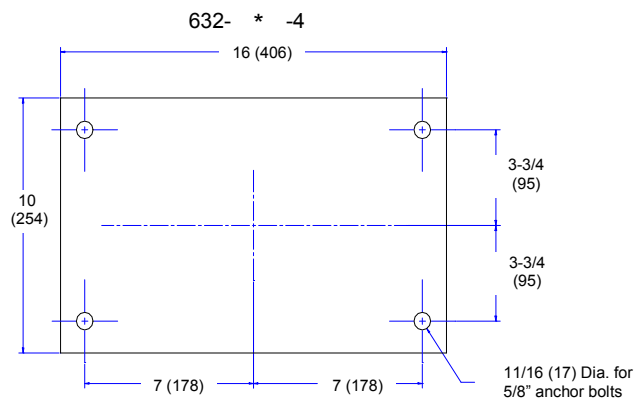
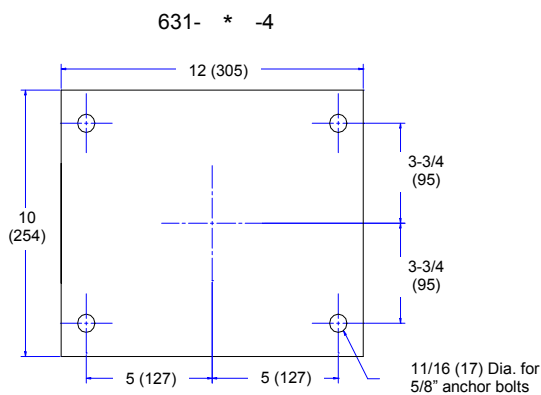


Installation of W-beam supports

Size	Color of spring	631		632		Defl. inches
		Rate lbs/in	Max. load lbs.	Rate lbs/in	Max. load lbs.	
A	Gray	100	150	200	300	1.5
B	Tan	200	260	400	520	1.3
C	Yellow	335	435	670	870	1.3
D	Green	500	550	1000	1100	1.1
E	Red	780	780	1560	1560	1.0
F	Silver	1070	1070	2140	2140	1.0
G	Brown	1400	1400	2800	2800	1.0
H	Black	2000	1800	3600	3600	1.0
K	Blk & Yel	2780	2500	5000	5000	1.0

Seismic Zone 4 Base Plate - California Applications

(for concrete foundation only, not required for *steel support or fuel-tank top installations.*)



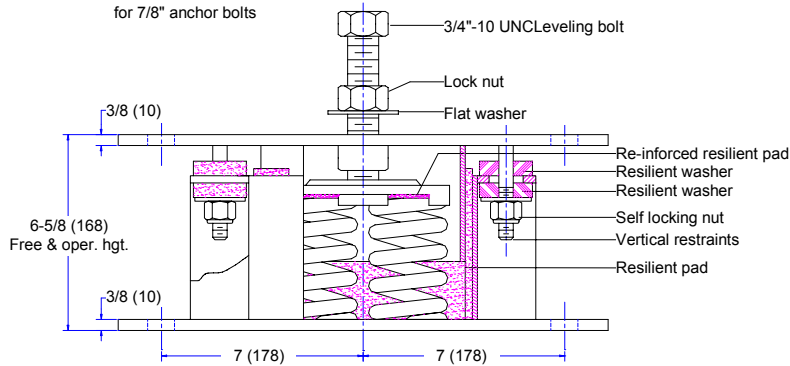
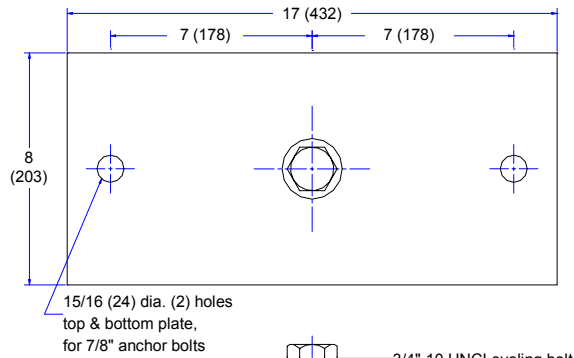
Note: * Spring size A through K.

ACE MOUNTINGS CO., INC.

11 Cross Avenue
South Amboy, NJ 08879
Tel: (732)721-6200 Fax: (732)721-5005
Email: acemount@att.net
Website: www.acemount.com

DIMENSIONS & LOAD CAPACITIES (634, 634-4)

83A-170-Q-3

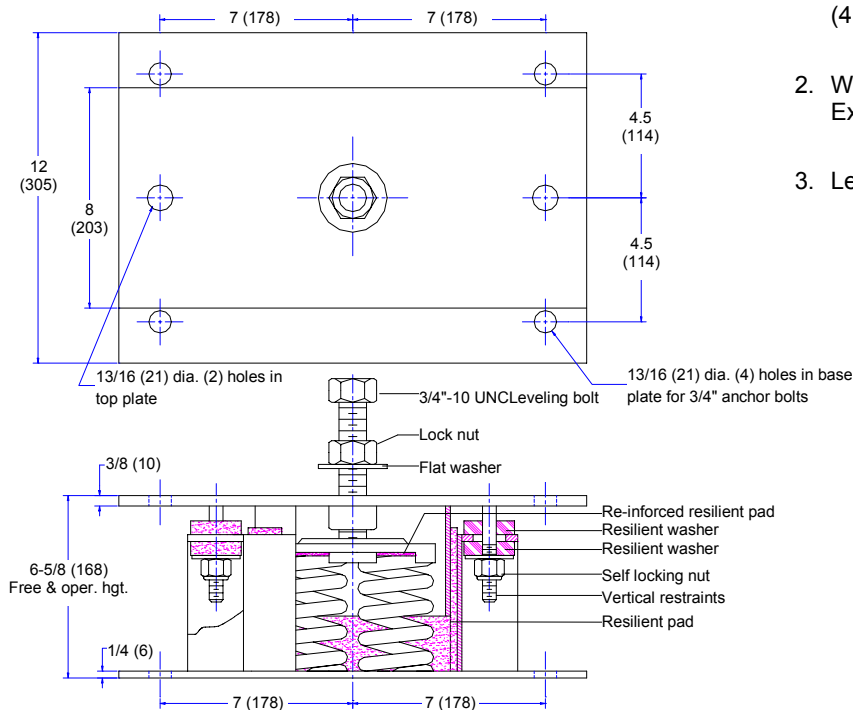


634

Type	Color of Spring	Spring Rate lbs/ in	Max. Load in Lbs	Defl. in Inches
A	Gray	400	600	1.5
B	Tan	800	1040	1.3
C	Yellow	1340	1740	1.3
D	Green	2000	2200	1.1
E	Red	3120	3120	1.0
F	Silver	4280	4280	1.0
G	Brown	5600	5600	1.0
H	Black	7200	7200	1.0
K	Blk & yel	10000	10000	1.0

Note:

- For seismic zone 4, concrete slab installation, (4)-hole base plate is required.
- Where "***" is the spring size A thru K.
Example: 634-K4
- Leveling bolt is also available in 1" & 7/8" dia.



634-*4

ACE MOUNTINGS CO., INC.

11 Cross Avenue
South Amboy, NJ 08879
Tel: (732)721-6200 Fax: (732)721-5005
Email: acemount@att.net
Website: www.acemount.com



CATALOG NO. 94A-867-F

Series 820

SPRING ISOLATORS

For Seismic Zone 2

Applications

Material Specifications

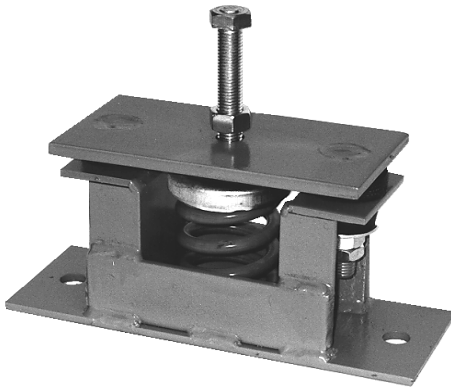
Housings: A-36 steel

Threaded Parts: grade 5 steel

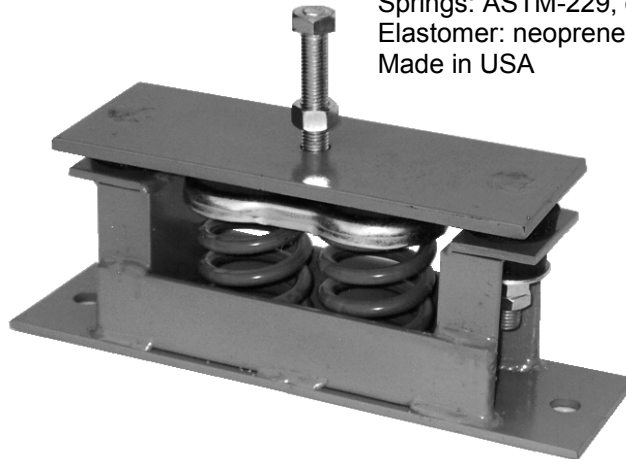
Springs: ASTM-229, oil tempered wire

Elastomer: neoprene rubber

Made in USA



Type "821"



Type "822"

Seismic Zone 2 Capability: The housings and anchor bolts are optimally designed for seismic zone 2 applications.

Superior Isolation Efficiency: Series "820" spring isolators consist of welded housings and 1 inch deflection spring elements to provide excellent isolation of vibration over a wide frequency range.

Lateral Stability: Free-standing springs are laterally stable and designed to provide 50% overload capacity.

Vertical Limit Stops: Adjustable vertical limit stops control vertical and lateral movement of isolated equipment due to load change, and lateral seismic load.

Easy To Install: Built-in leveling bolt eliminates shimming in all applications, and save installation costs.

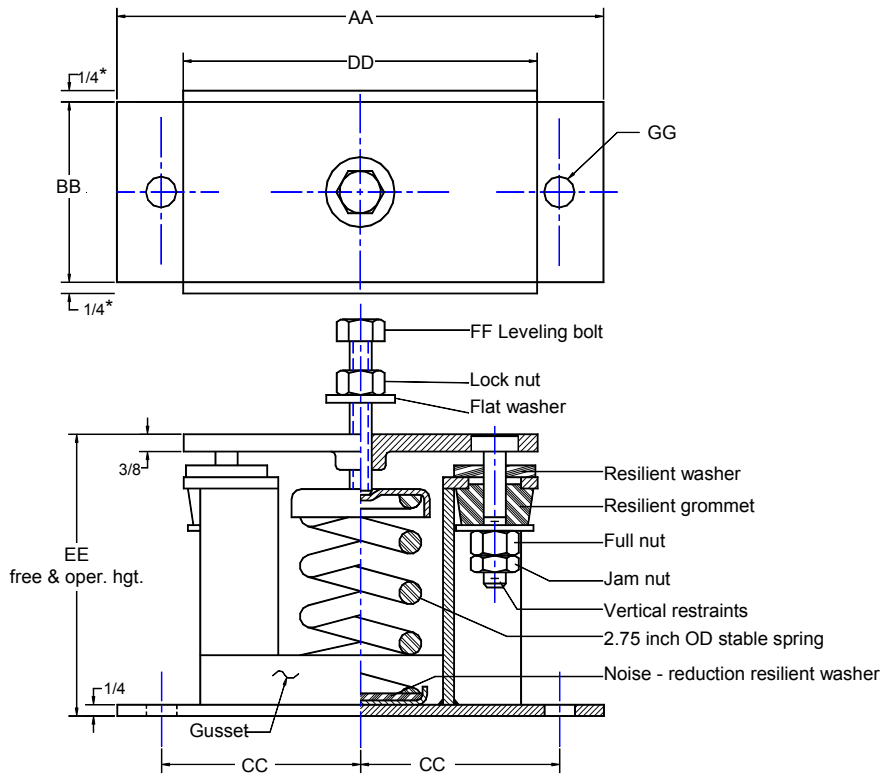
Effective Noise Reduction: The resilient washers under the springs effectively interrupt structure-borne noise transmission paths to prevent noise amplifications caused by sounding-board effect. The resilient washers replace the neoprene base pad to allow solid connections of anchor bolts and base plate.

ACE MOUNTINGS CO., INC.

11 Cross Avenue
South Amboy, NJ 08879
Tel: (732)721-6200 Fax: (732)721-5005
Email: acemount@att.net
Website: www.acemount.com

DIMENSIONS & LOAD CAPACITIES

821 single-spring unit
822 double-spring unit
824 four-spring unit



Note: * Type 824 only.

TYPE	DIMENSIONS IN INCHES						
	AA	BB	CC	DD	EE	FF	GG
821	11	4	4-1/2	8	6	5/8-11 x 4 UNC	11/16
822	14-1/2	4	6-1/4	11-1/2	6	5/8-11 x 4 UNC	11/16
824	14-1/2	6	6-1/4	12	6-1/2	**	13/16

** Available in 3/4-10 x 5 and 1-8 x 5

TYPE	COLOR OF SPRING	MAX. LOAD IN LBS.			DEFLECTION IN INCHES
		821	822	824	
A	gray	150	300	600	1.5
B	tan	260	520	1040	1.3
C	yellow	435	870	1740	1.3
D	green	550	1100	2200	1.1
E	red	780	1560	3120	1.0
F	silver	1070	2140	4280	1.0
G	brown	1400	2800	5600	1.0
H	black	1800	3600	7200	1.0
K	blk & yel	2500	5000	10000	1.0

ACE MOUNTINGS CO., INC.

11 Cross Avenue
South Amboy, NJ 08879
Tel: (732)721-6200 Fax: (732)721-5005
Email: acemount@att.net
Website: www.acemount.com



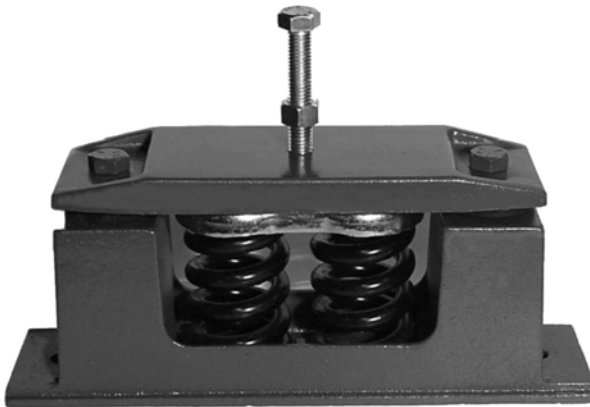
CATALOG NO. 2KA-1355-C

Series 920

SPRING ISOLATORS

For Seismic Zone 2

Applications



Type 922

Material Specifications

Housings: ASTM A-536-84 Ductile Iron
Threaded Parts: grade 5 steel
Springs: ASTM-229, oil tempered wire
Elastomer: neoprene rubber
Made in USA

Seismic Zone 2 Capability: The housings and anchor bolts are optimally designed for seismic zone 2 applications. Minimum housing strength is 1.5 G's.

Superior Isolation Efficiency: Series "920" spring isolators consist of ductile iron housings and 1 inch deflection spring elements to provide excellent isolation of vibration over a wide frequency range.

Lateral Stability: Free-standing springs are laterally stable and designed to provide 50% overload capacity.

Vertical Limit Stops: Adjustable vertical limit stops control vertical and lateral movement of isolated equipment due to load change, and lateral seismic load.

Easy To Install: Built-in leveling bolt eliminates shimming in all applications, and save installation costs.

Effective Noise Reduction: The resilient washers under the springs effectively interrupt structure-borne noise transmission paths to prevent noise amplifications caused by sounding-board effect. The resilient washers replace the neoprene base pad to allow solid connections of anchor bolts and base plate.

ACE MOUNTINGS CO., INC.

11 Cross Avenue
South Amboy, NJ 08879
Tel: (732)721-6200 Fax: (732)721-5005
Email: acemount@att.net
Website: www.acemount.com

MP950003



SERIES 1060

MOBILE ISOLATORS

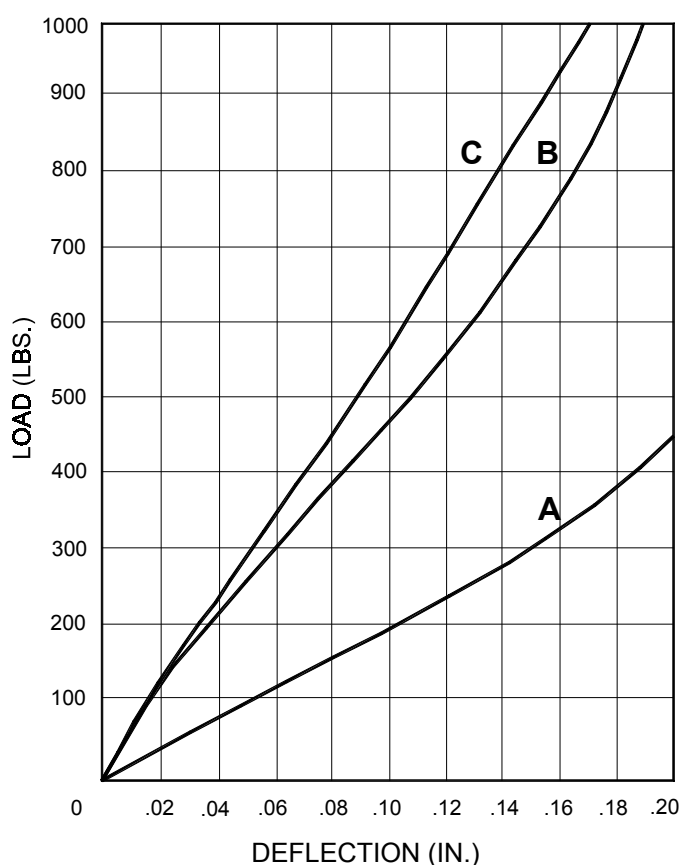
CATALOG NO. 90A-609-D



Pre-Engineered Design: Series 1060 isolators are designed for different load ranges. A steel bushing is properly sized for excellent isolation efficiency and motion control.

Safety Protection: The through-bolt and double-acting designs result in an all directional safety isolator suitable for stationary and mobile applications.

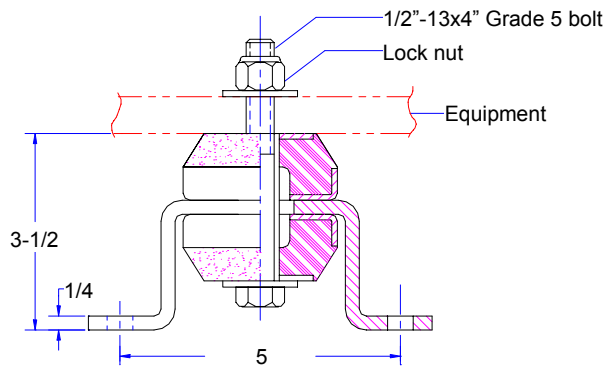
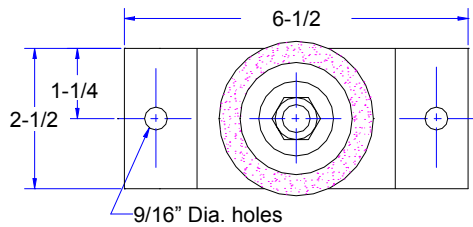
All Directional Design: Series 1060 isolators can be used as floor support, overhead suspension, and wall mounted stabilizer.



ACE MOUNTINGS CO., INC.

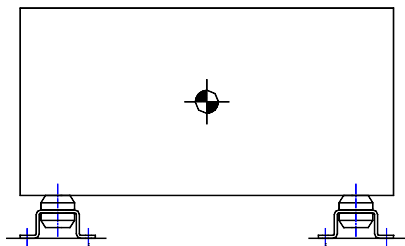
11 Cross Avenue
South Amboy, NJ 08879
Tel: (732)721-6200 Fax: (732)721-5005
Email: acemount@att.net
Website: www.acemount.com

DIMENSIONS & LOAD RATING

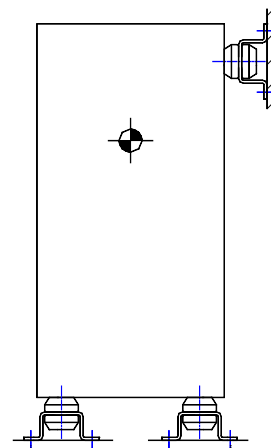


Size	Load Ranges (Lbs.)	
	.09"	.12"
A	150	250
B	400	600
C	600	750

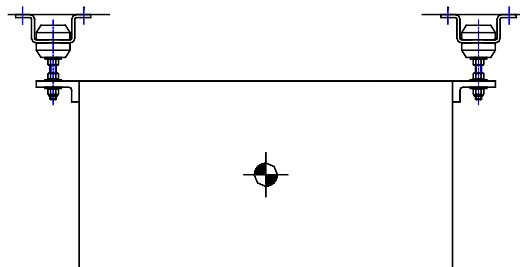
TYPICAL INSTALLATIONS



FLOOR MOUNT



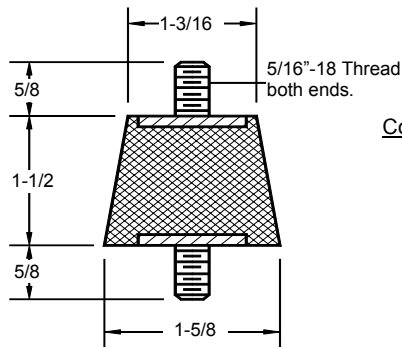
**FLOOR MOUNT
AND STABILIZER**



OVERHEAD SUSPENSION

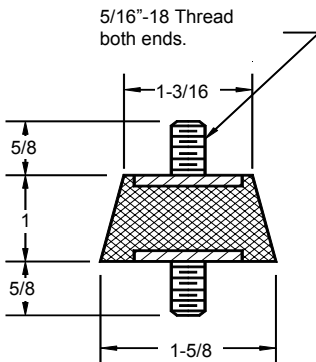
ACE MOUNTINGS CO., INC.

11 Cross Avenue
South Amboy, NJ 08879
Tel: (732)721-6200 Fax: (732)721-5005
Email: acemount@att.net
Website: www.acemount.com

CYLINDRICAL MOUNTS**E1**Compression

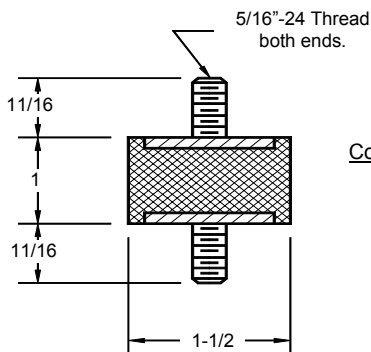
60 lbs.

3/16 in.

**E2**Compression

100 lbs.

5/32 in.

**E3**Compression

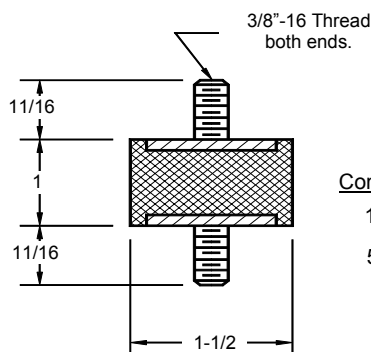
135 lbs.

5/32 in.

Shear

40 lbs.

1/4 in.

**E3-1**Compression

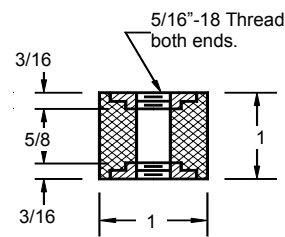
135 lbs.

5/32 in.

Shear

40 lbs.

1/4 in.

**E4**Compression

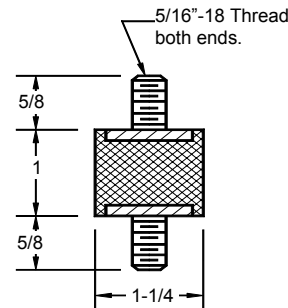
25 lbs.

1/16 in.

Shear

10 lbs.

5/32 in.

**E1210**Compression

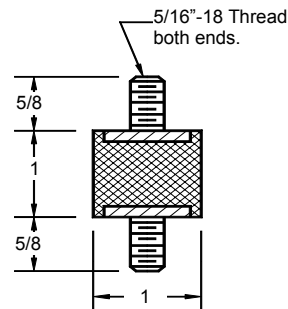
65 lbs.

1/8 in.

Shear

15 lbs.

5/32 in.

**E5**Compression

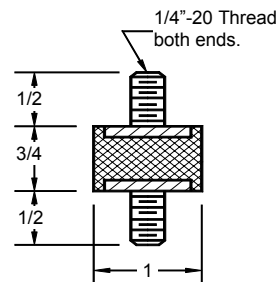
40 lbs.

1/8 in.

Shear

10 lbs.

5/32 in.

**E6**Compression

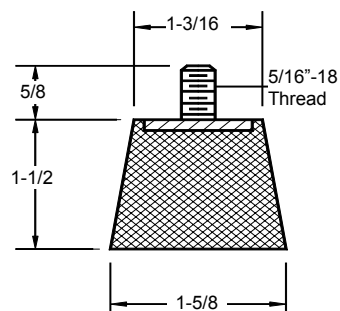
50 lbs.

1/8 in.

Shear

10 lbs.

1/8 in.

**E7**Compression

60 lbs.

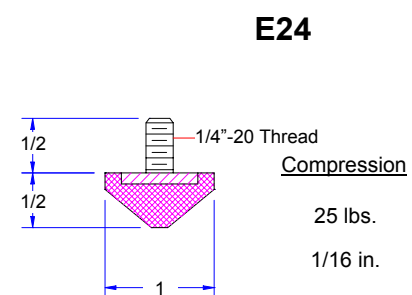
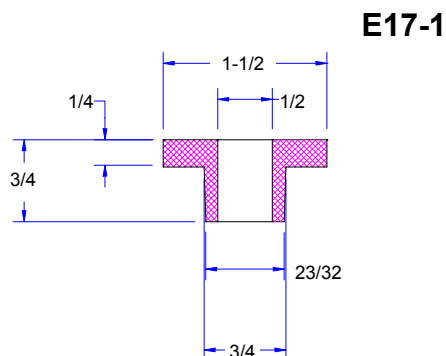
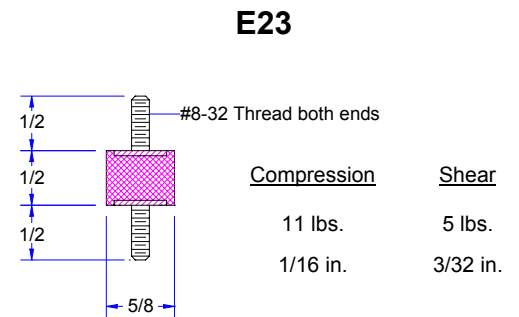
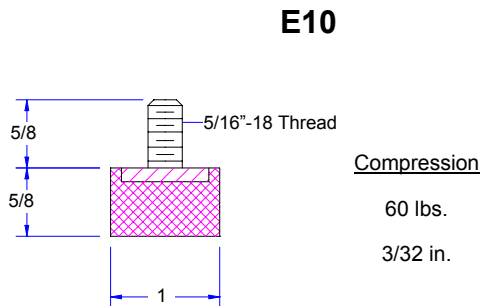
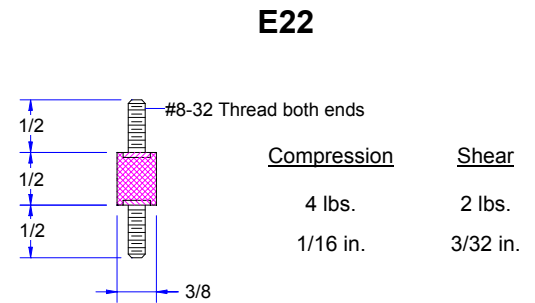
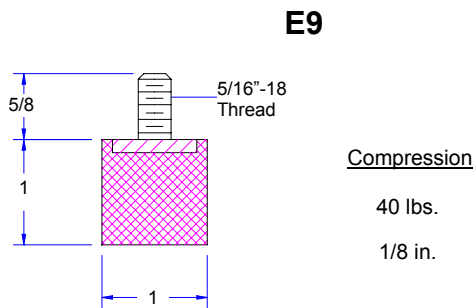
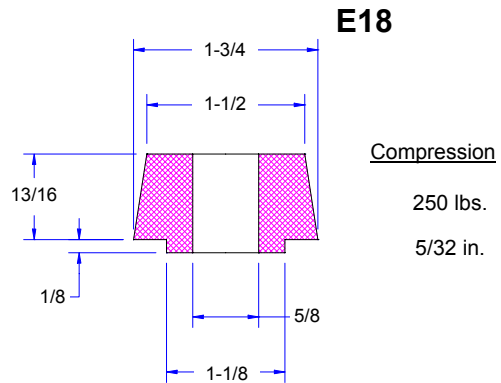
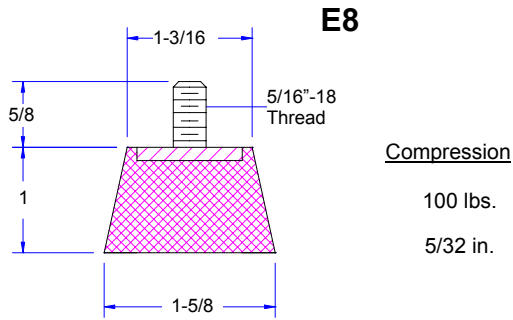
3/16 in.

ACE MOUNTINGS CO., INC.

11 Cross Avenue
South Amboy, NJ 08879
acemount@att.net

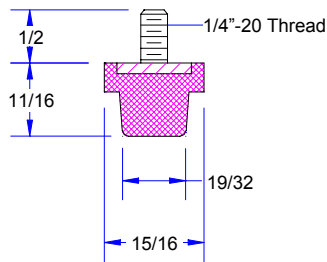
TEL: (732)721-6200
FAX: (732)721-5005
www.acemount.com

CYLINDRICAL MOUNTS



CYLINDRICAL MOUNTS

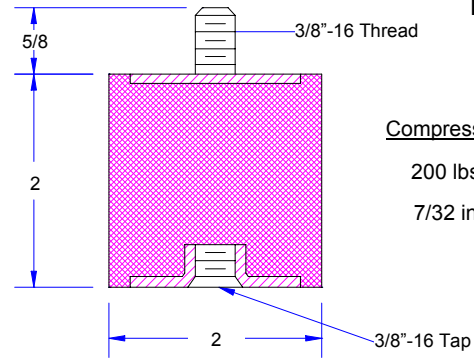
E25



Compression

25 lbs.
1/16 in.

E31



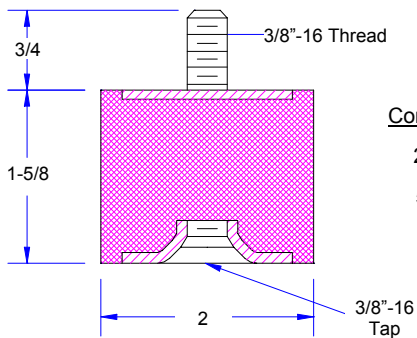
Compression

200 lbs.
7/32 in.

Shear

150 lbs.
1/2 in.

E30



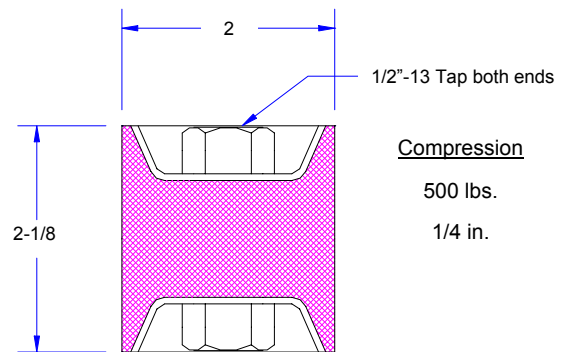
Compression

250 lbs.
5/32 in.

Shear

125 lbs.
1/2 in.

E40



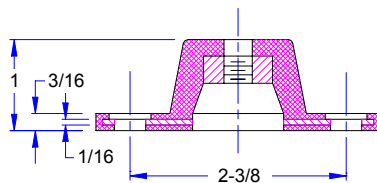
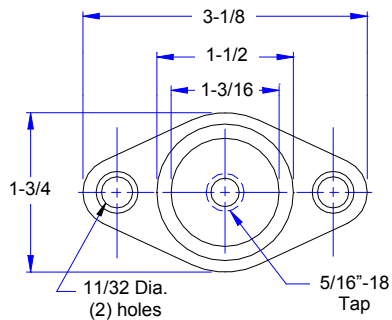
Compression

500 lbs.
1/4 in.

Shear

200 lbs.
1/2 in.

E11



Compression

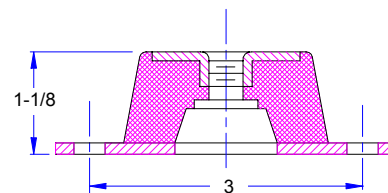
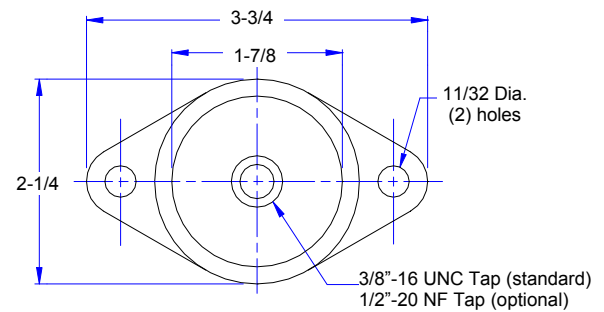
E11-A

37.5 lbs.
0.10 in.

E11-B

115 lbs.
0.10 in.

E12



Compression

E12-A

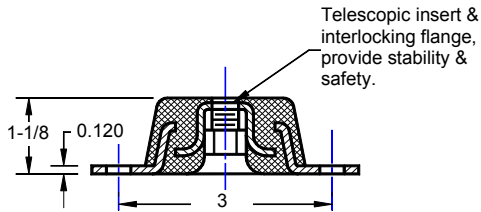
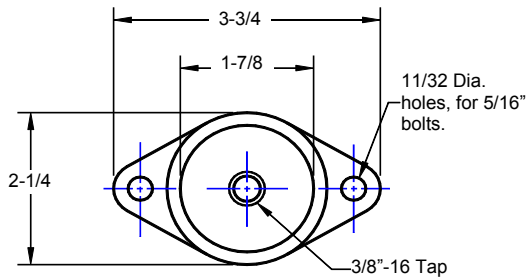
100 lbs.
1/8 in.

E12-B

150 lbs.
1/8 in.

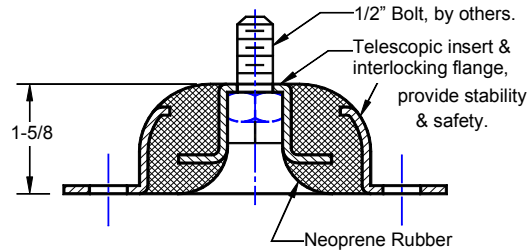
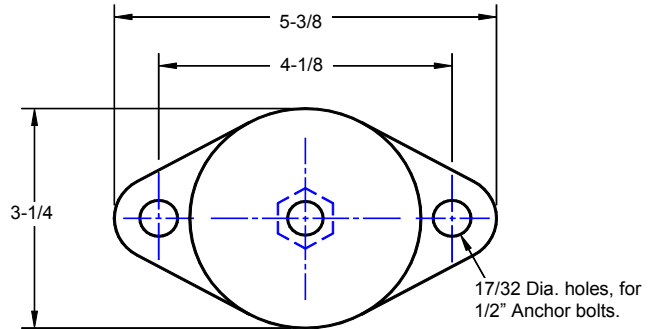
E12-C

175 lbs.
1/8 in.



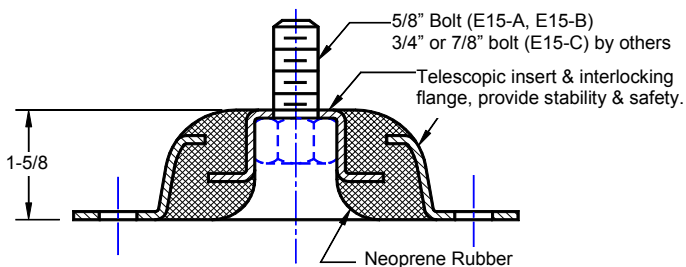
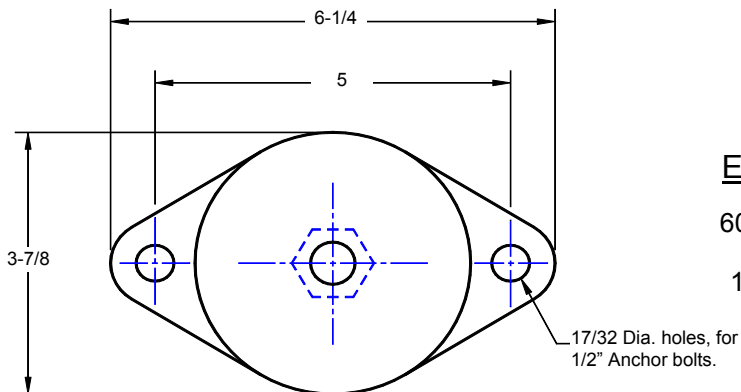
Compression

<u>E13-A</u>	<u>E13-B</u>
150 lbs.	200 lbs.
0.085 in.	0.06 in.



Compression

<u>E14-A</u>	<u>E14-B</u>	<u>E14-C</u>
375 lbs.	700 lbs.	1000 lbs.
1/8 in.	1/8 in.	1/8 in.



Compression

<u>E15-A</u>	<u>E15-B</u>	<u>E15-C</u>
600 lbs.	1100 lbs.	2000 lbs.
1/8 in.	1/8 in.	1/8 in.

ACE MOUNTINGS CO., INC.

11 Cross Avenue
South Amboy, NJ 08879
acemount@att.net

TEL: (732)721-6200
FAX: (732)721-5005
www.acemount.com